

Larry Gets Lost Activity Kit

Celebrating 10 Years of Larry!

SEATTLE



little bigfoot

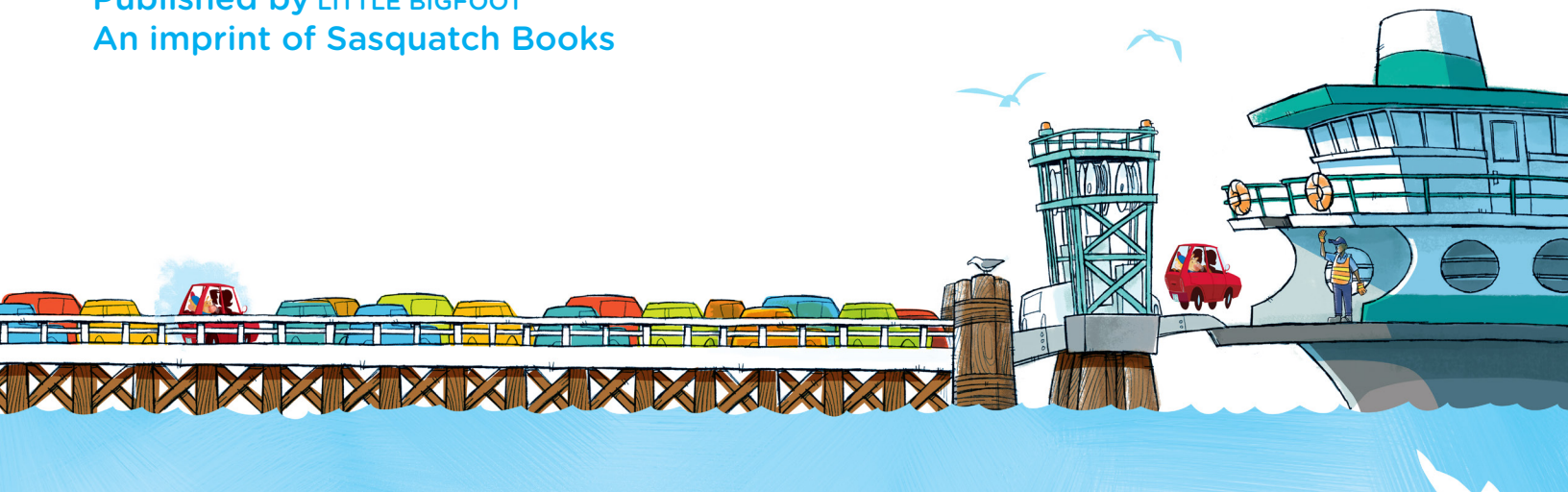
an imprint of sasquatch books



ILLUSTRATED BY John Skewes

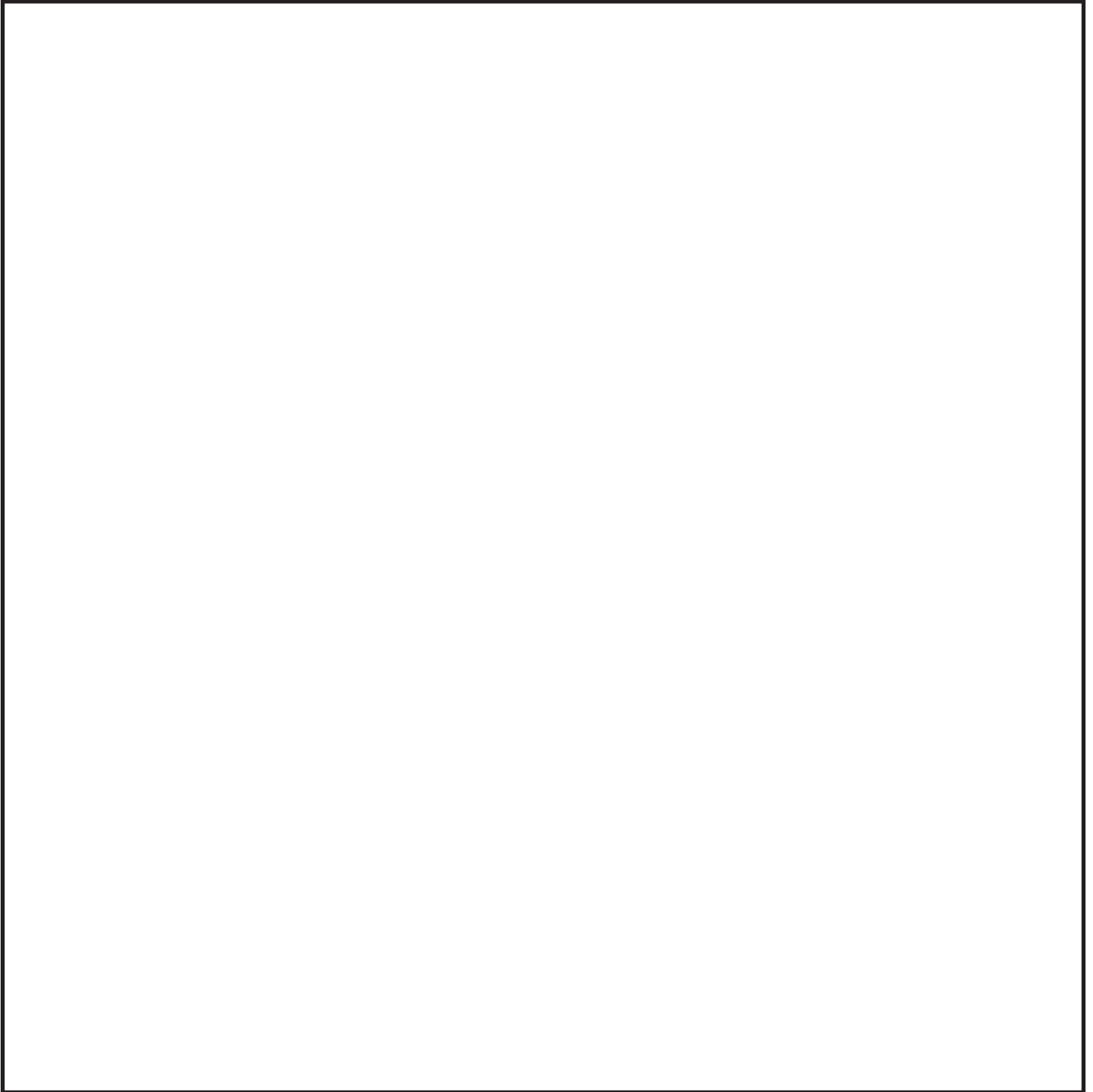
Larrygetslost.com

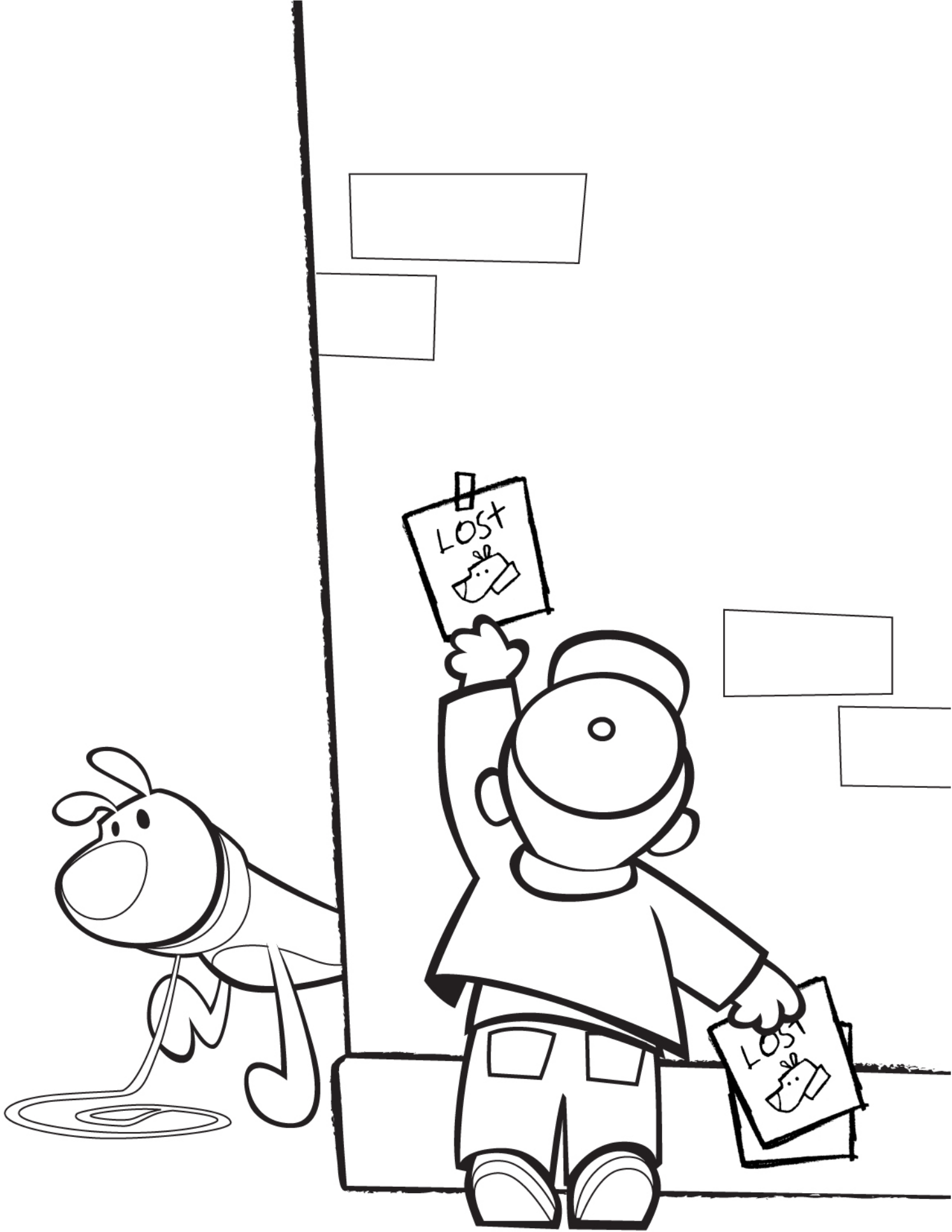
Published by LITTLE BIGFOOT
An imprint of Sasquatch Books



Help us Celebrate Larry's 10th Birthday!

Larry loves to eat his favorite snacks!
Can you draw your favorite birthday treat to share with him?

A large, empty rectangular box with a thin black border, intended for a child to draw a birthday treat. The box occupies the lower two-thirds of the page.





Help Larry Discover Seattle!

Can you help Larry get to know your city?
Connect the picture to the name and help him learn
more about where you live!

Pike Place Market



Space Needle



Fremont Troll



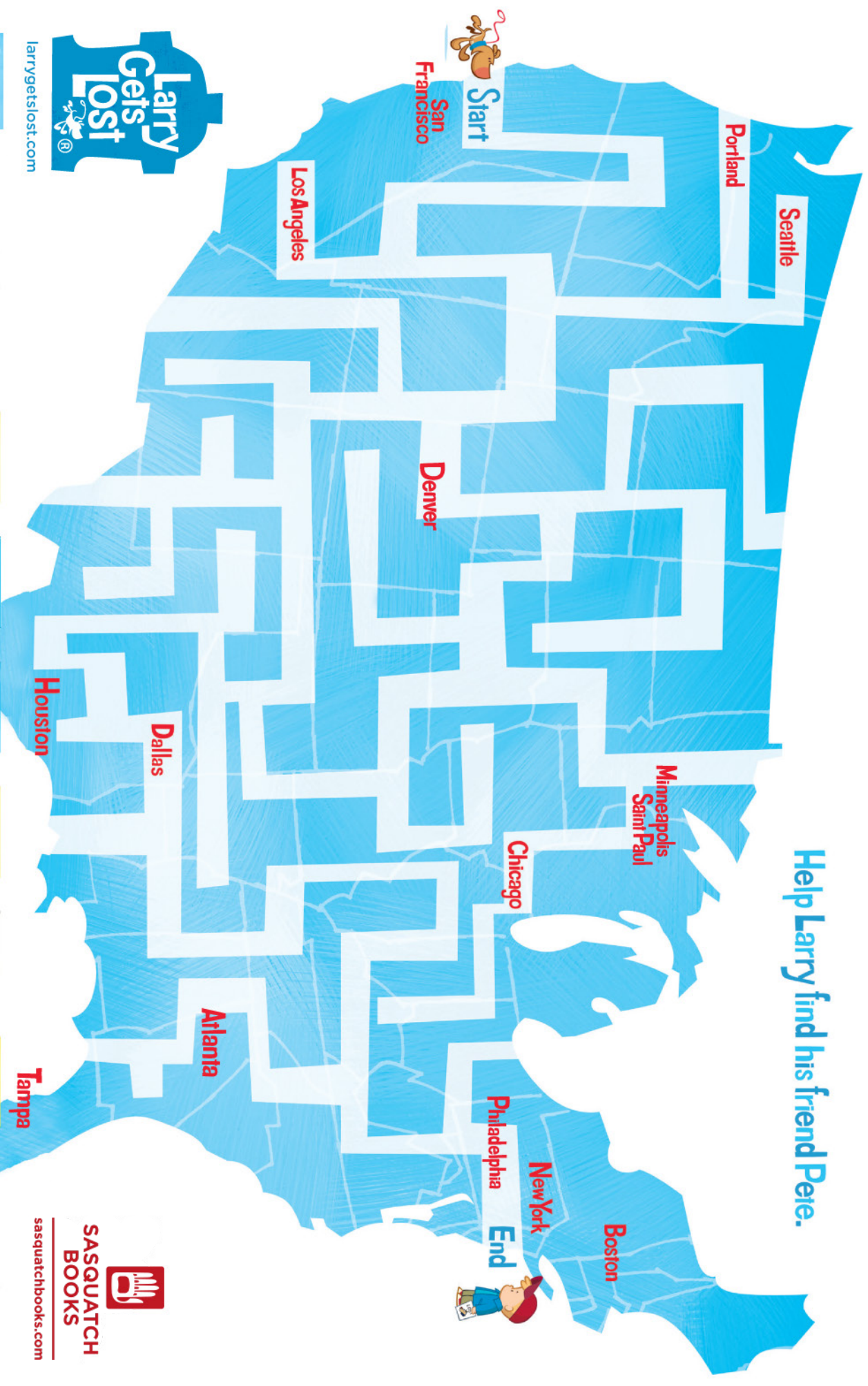
Gasworks Park



Seattle Art Museum



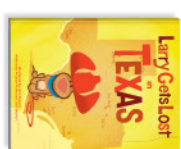
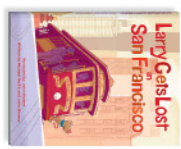
Help **Larry** find his friend **Pete**.



larrygetslost.com



**SASQUATCH
BOOKS**
sasquatchbooks.com



Created & Illustrated by John Skewes, the best-selling Larry Gets Lost children's books are available wherever books are sold.

How to Draw Larry

1. Using a pencil, draw a circle.



2. Draw a second circle and add Larry's mouth.



3. Add the collar and a teardrop shape for Larry's body.



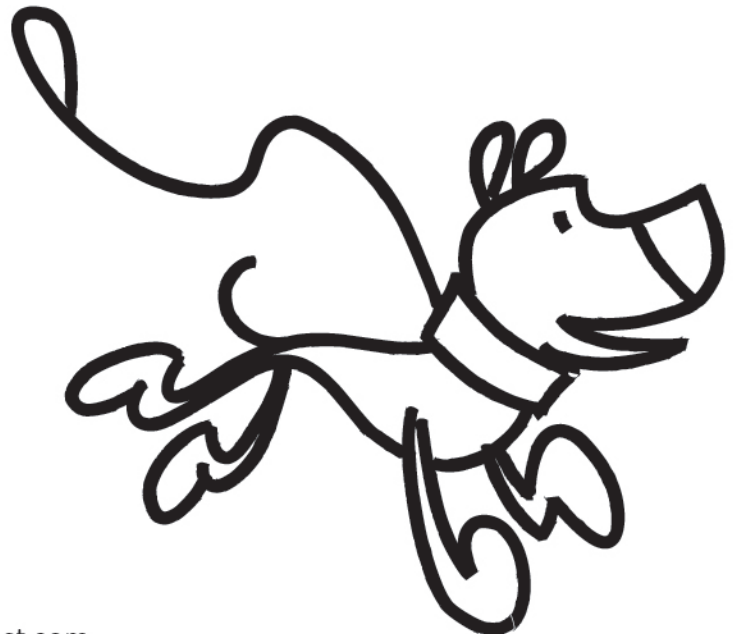
4. Add the legs, ears, and tail.



5. Use a **marker** to trace over the sketch. Add eyes and leash.

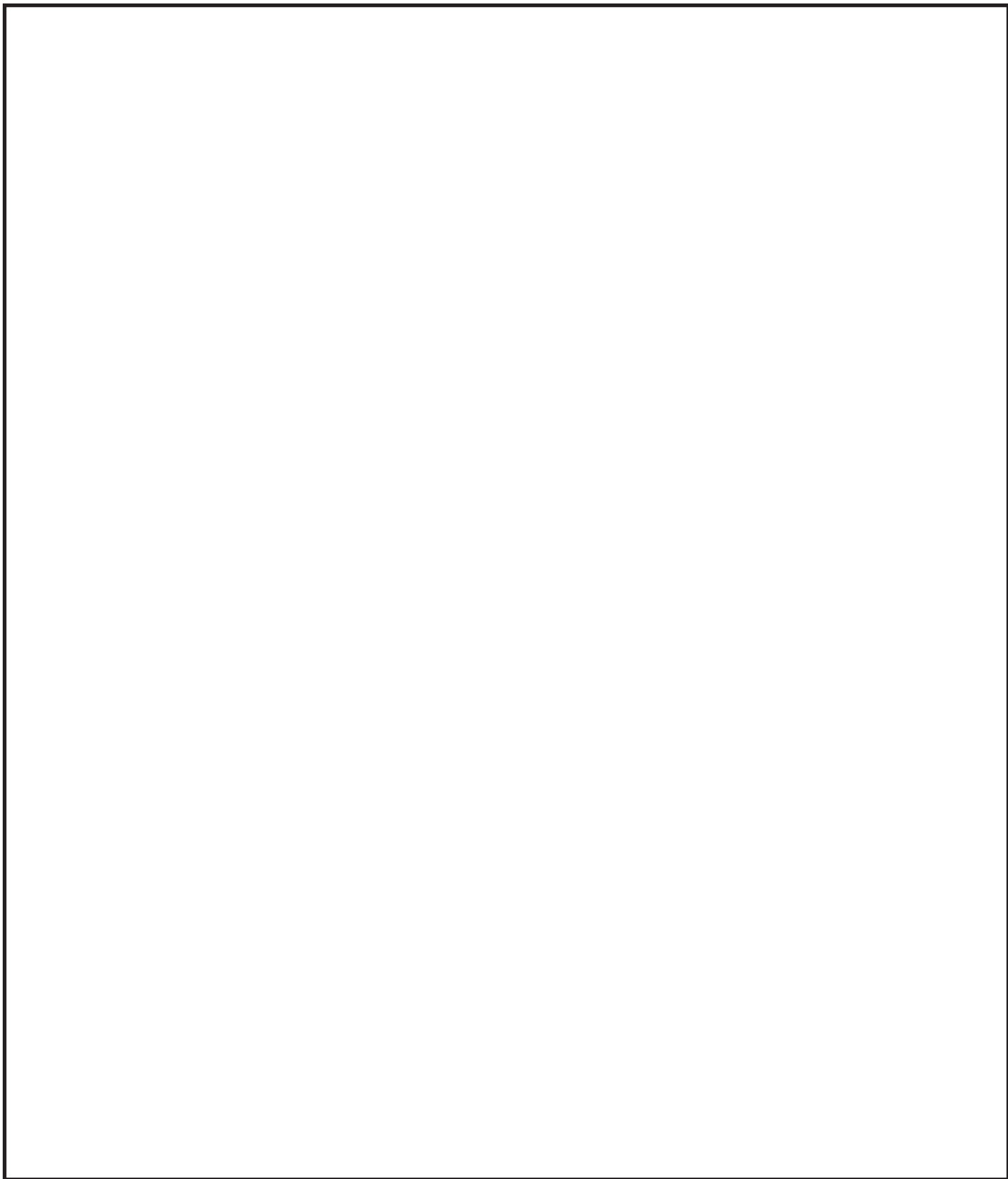


6. Erase the pencil line.



How to Draw Larry

5. Your turn! Try drawing Larry in the space below.

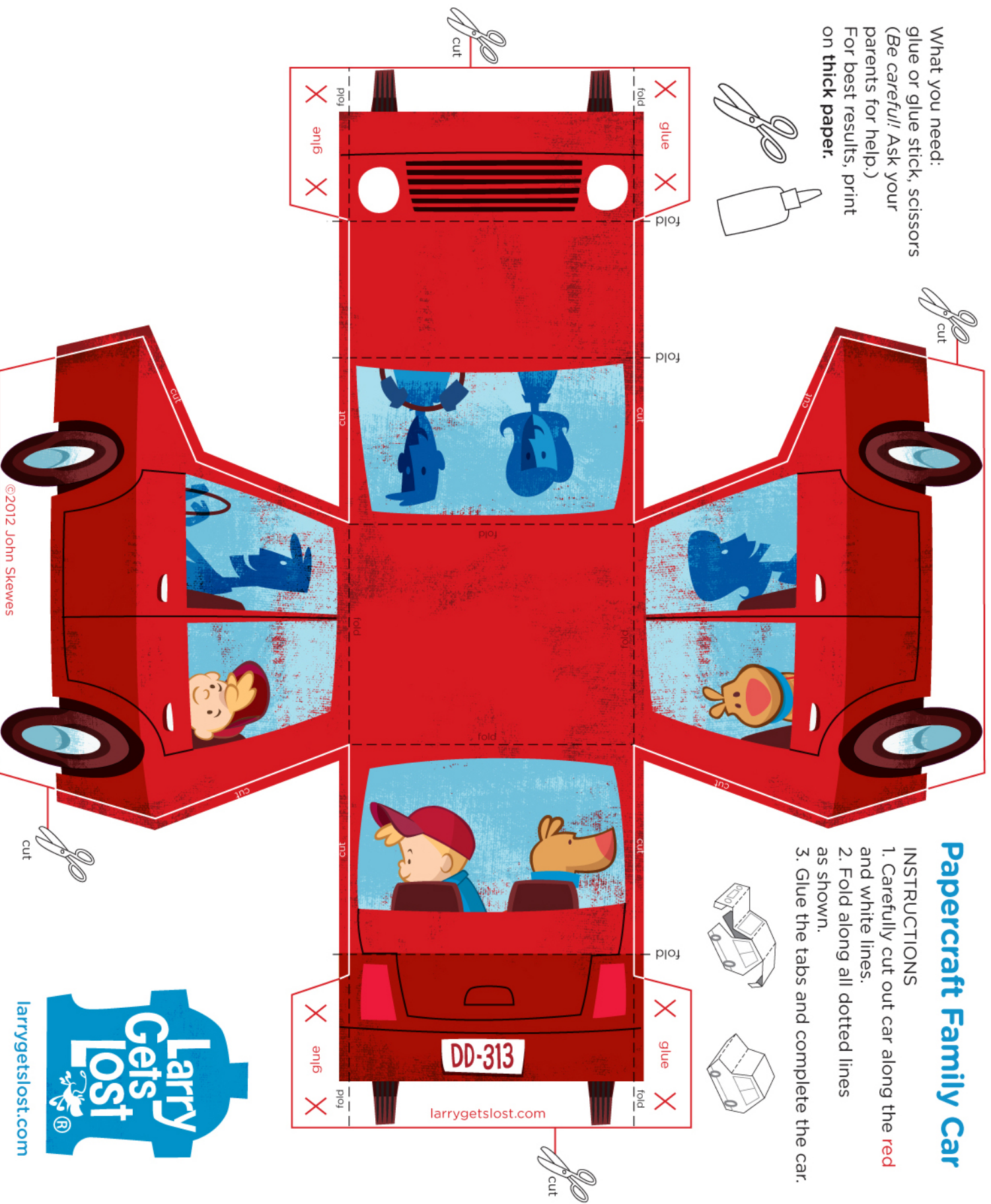
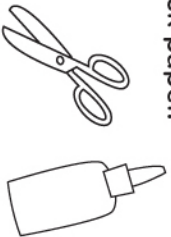


Papercraft Family Car

INSTRUCTIONS

1. Carefully cut out car along the **red** and white lines.
2. Fold along all dotted lines as shown.
3. Glue the tabs and complete the car.

What you need:
glue or glue stick, scissors
(*Be careful!* Ask your
parents for help.)
For best results, print
on **thick paper**.





Storytime

with Larry Gets Lost!

Date _____

Time _____