

Larry Gets Lost Activity Kit

Celebrating 10 Years of Larry!

SAN FRANCISCO



little bigfoot

an imprint of sasquatch books



ILLUSTRATED BY John Skewes

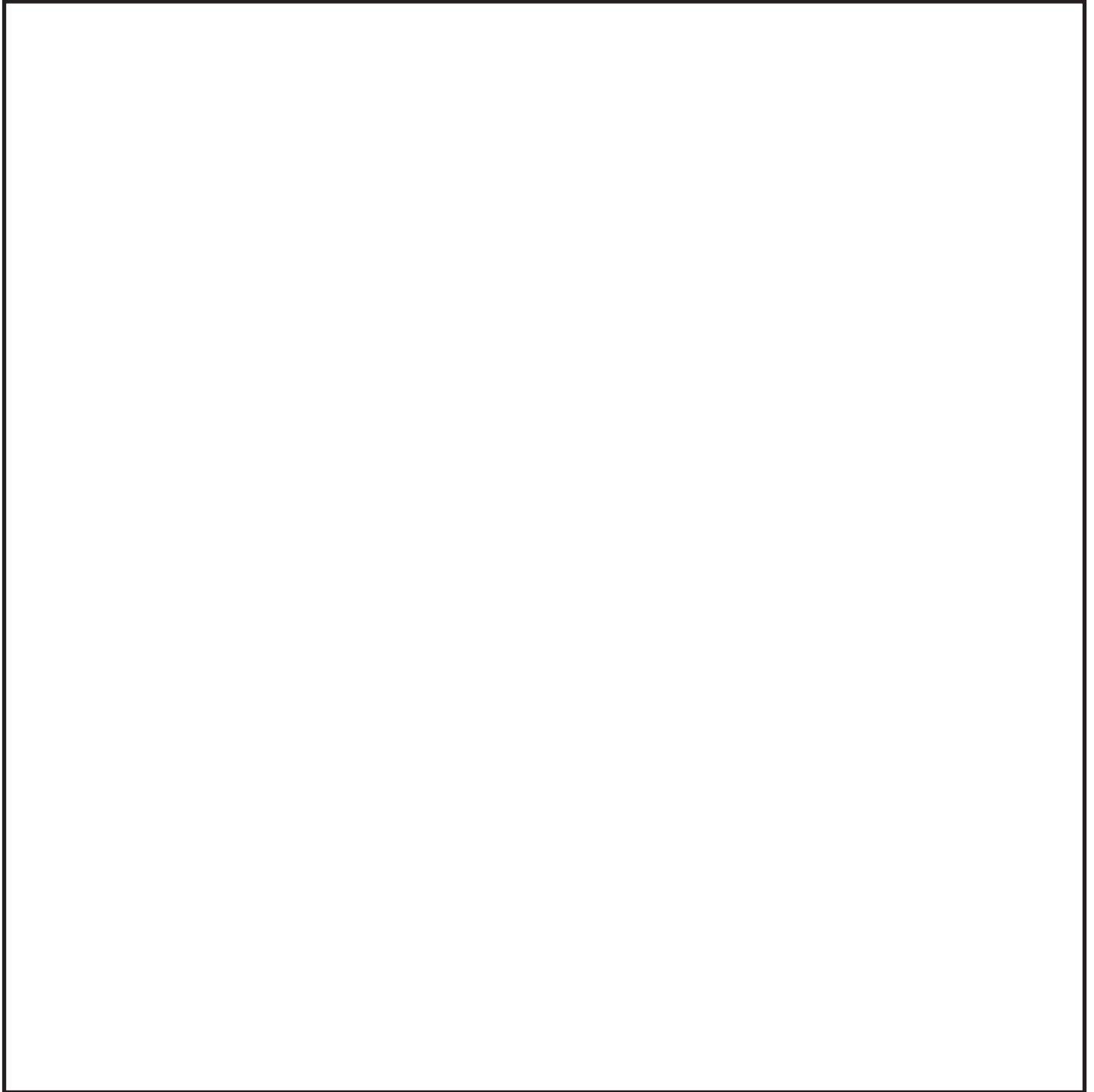
LarryGetsLost.com

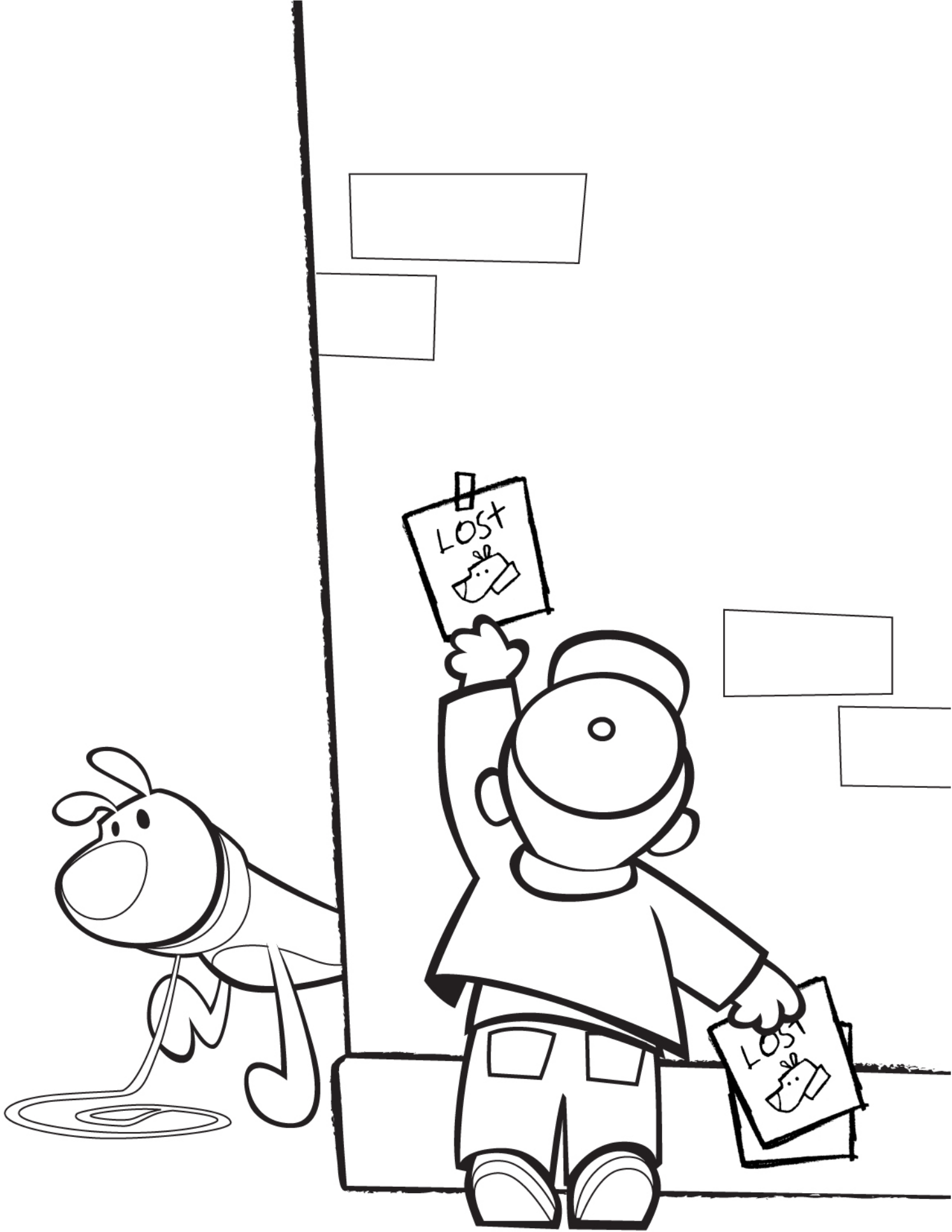
Published by LITTLE BIGFOOT
An imprint of Sasquatch Books



Help Us Celebrate Larry's 10th Birthday!

Larry loves to eat his favorite snacks!
Can you draw your favorite birthday treat to share with him?

A large, empty rectangular box with a thin black border, intended for a child to draw a birthday treat.

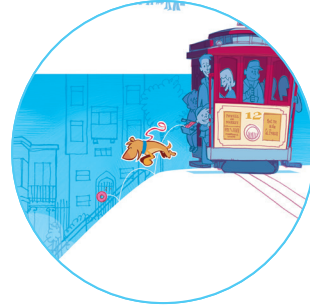




Help Larry Discover San Francisco!

Can you help Larry get to know your city?
Connect the picture to the name and help him learn
more about where you live!

Golden Gate Bridge



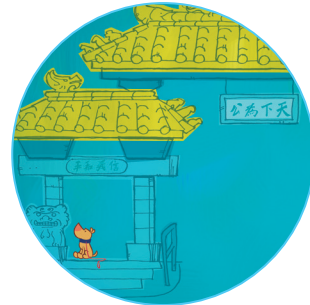
Cable car



Alamo Square



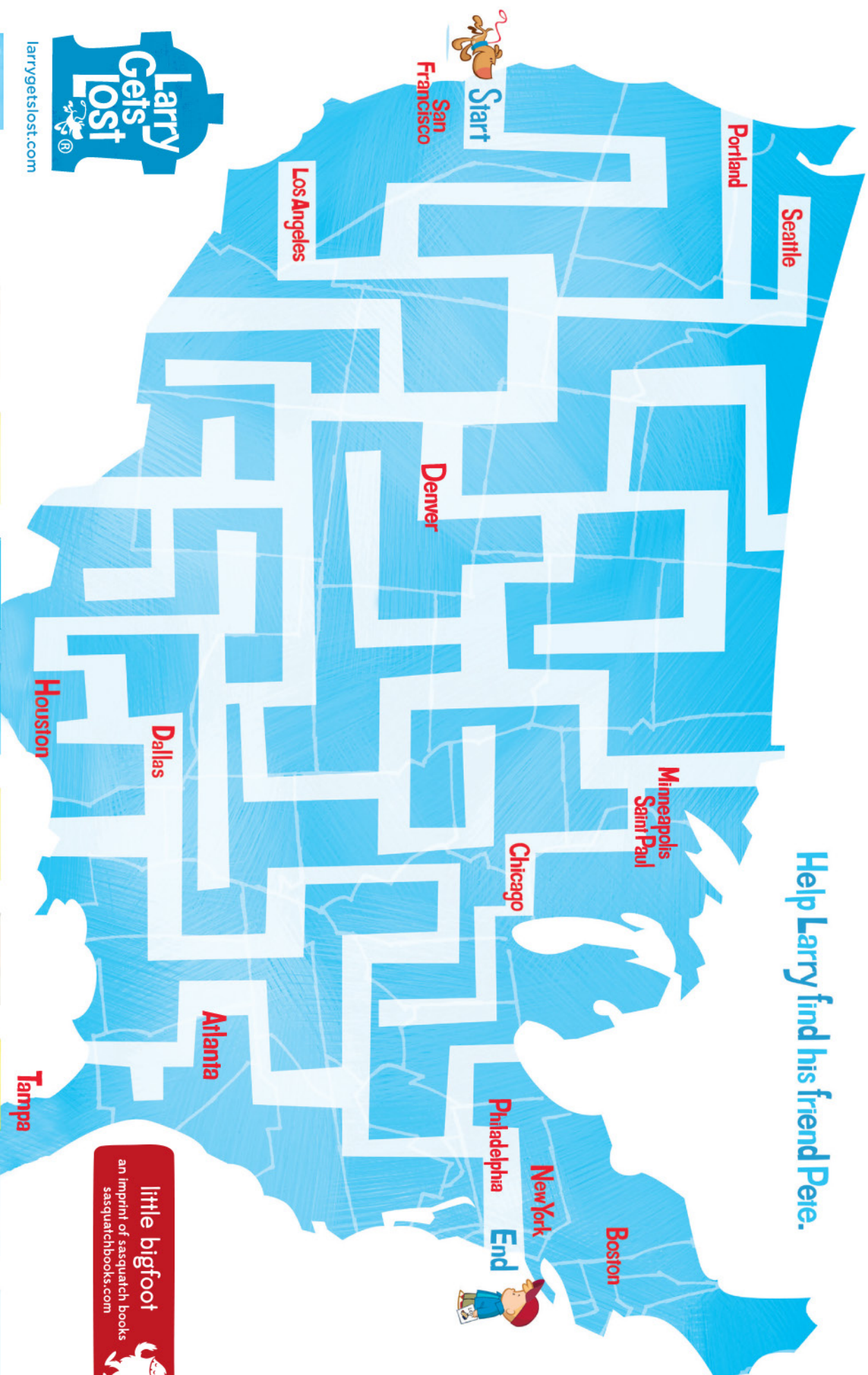
Alcatraz Island



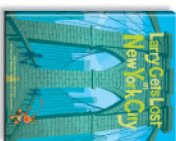
Dragon Gate



Help **Larry** find his friend **Pete**.



larrygetslost.com



How to Draw Larry

1. Using a pencil, draw a circle.



2. Draw a second circle and add Larry's mouth.



3. Add the collar and a teardrop shape for Larry's body.



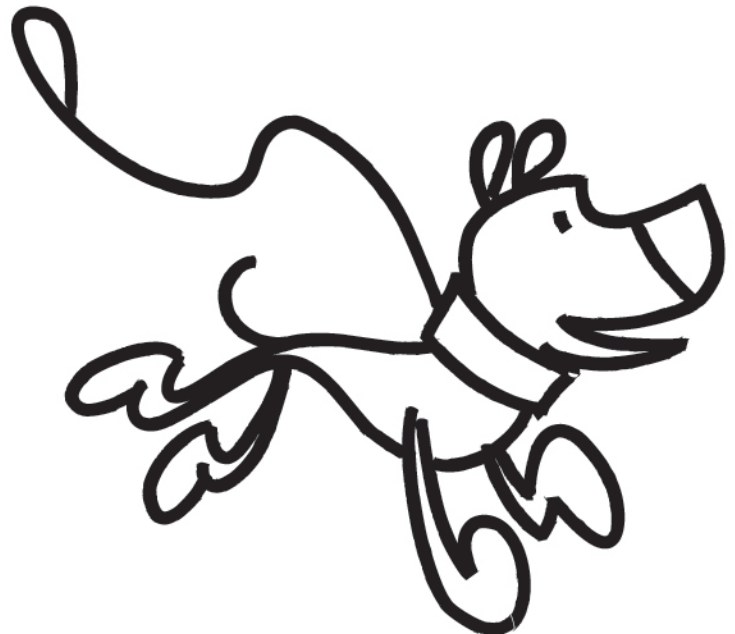
4. Add the legs, ears, and tail.



5. Use a marker to trace over the sketch. Add eyes and a leash.

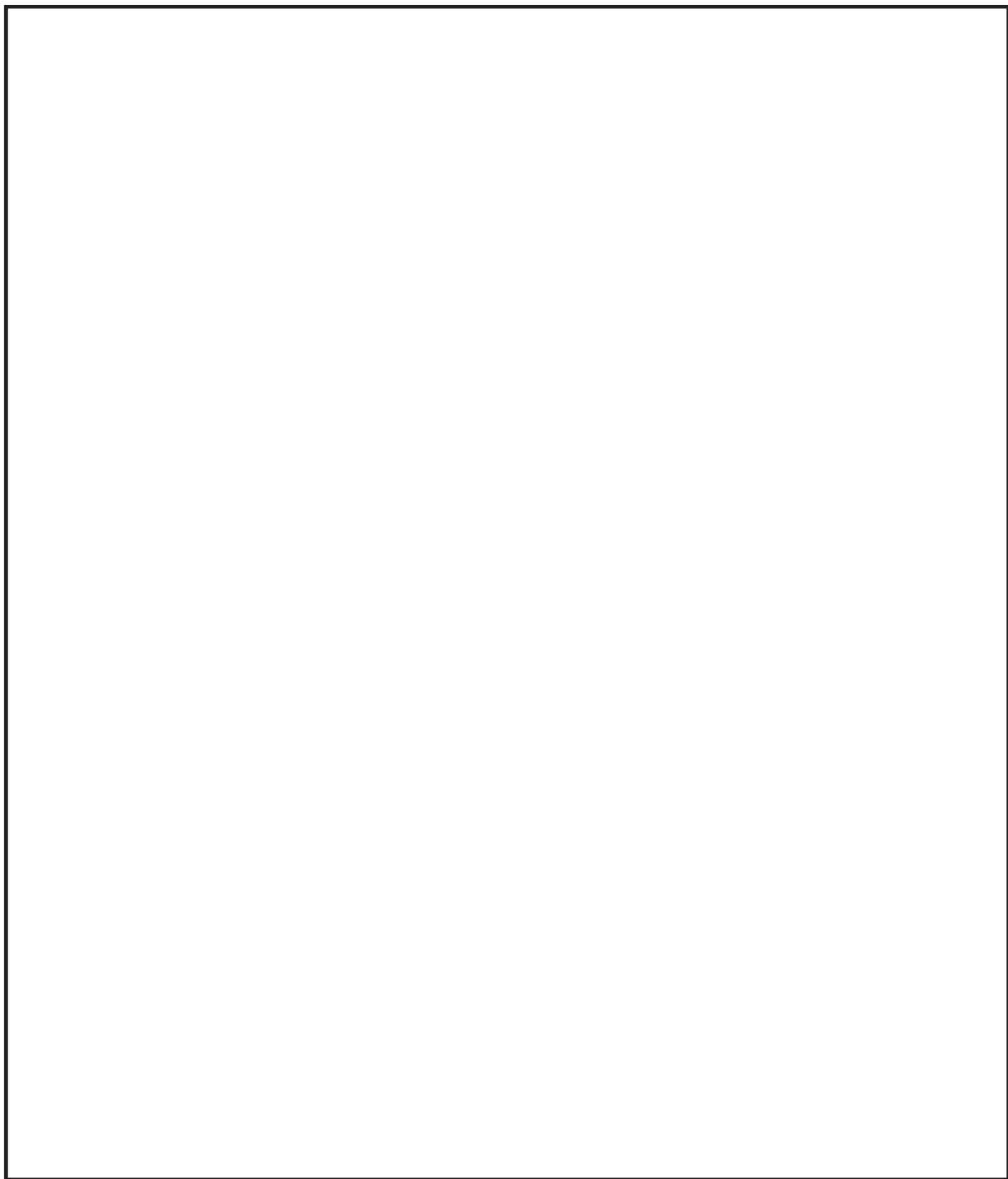


6. Erase the pencil lines.

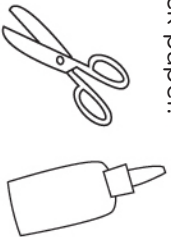


How to Draw Larry

Your turn! Try drawing Larry in the space below.



What you need:
glue or glue stick, scissors.
(Be careful! Ask your
parents for help.)
For best results, print
on thick paper.



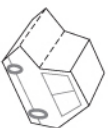
©2012 John Skewes



Papercraft Family Car

INSTRUCTIONS

1. Carefully cut out the car along the red and white lines.
2. Fold along all dotted lines as shown.
3. Glue the tabs and complete the car.



larrygetslost.com



Storytime

with Larry Gets Lost!

Date _____

Time _____