

# Larry Gets Lost Activity Kit



little bigfoot  
an imprint of sasquatch books

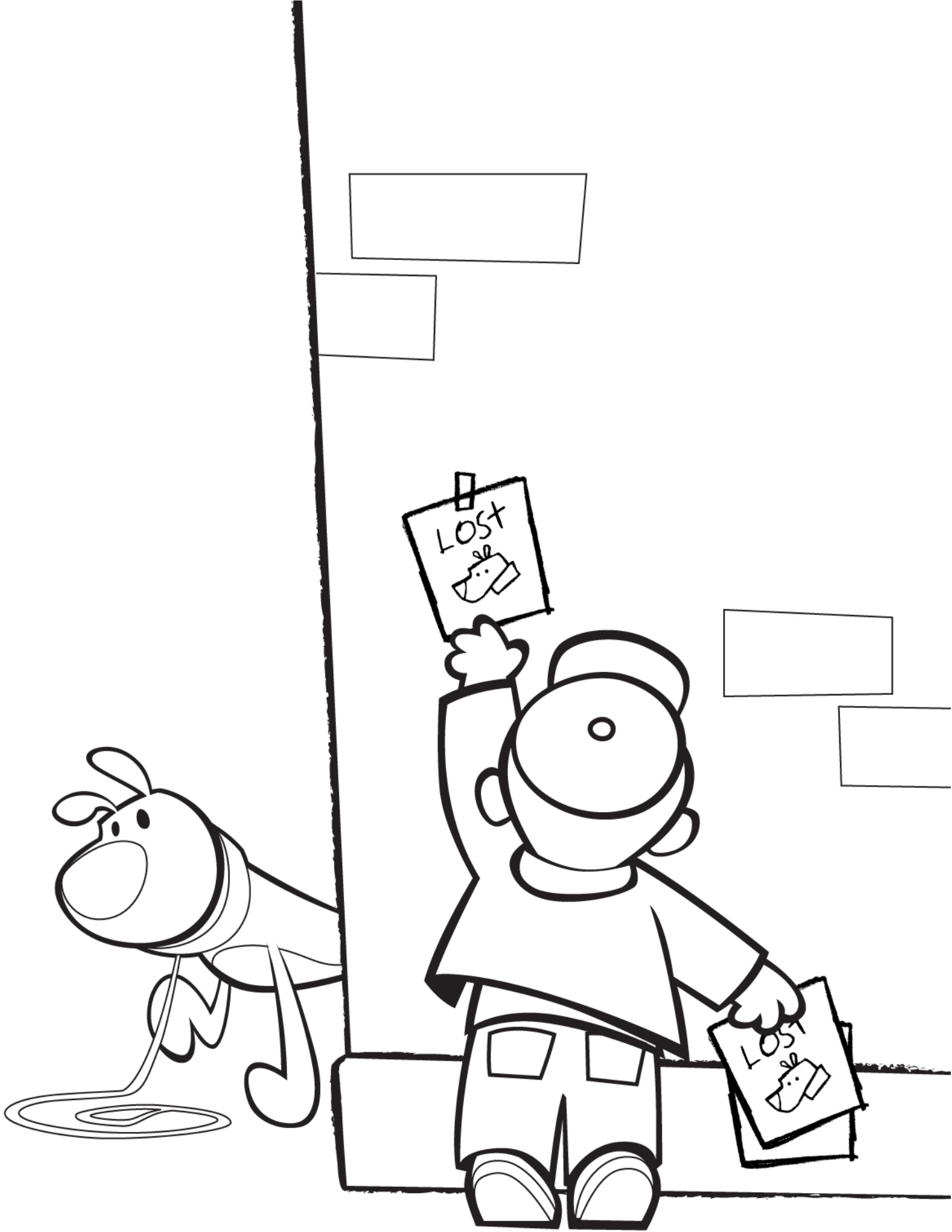
---

ILLUSTRATED BY John Skewes

[LarryGetsLost.com](http://LarryGetsLost.com)

Published by LITTLE BIGFOOT  
An imprint of Sasquatch Books

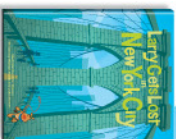
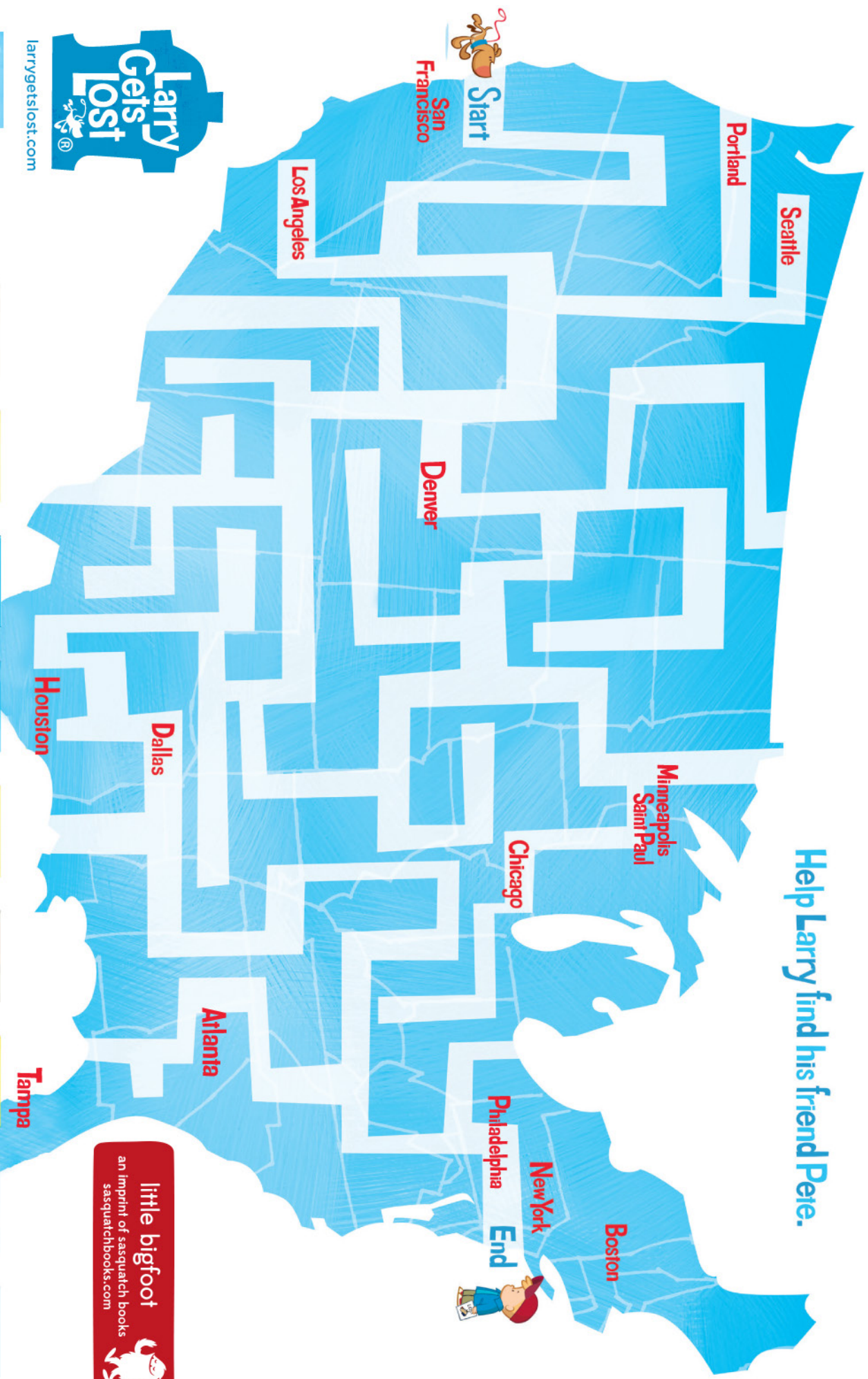








Help **Larry** find his friend **Pete**.



# How to Draw Larry

1. Using a pencil, draw a circle.



2. Draw a second circle and add Larry's mouth.



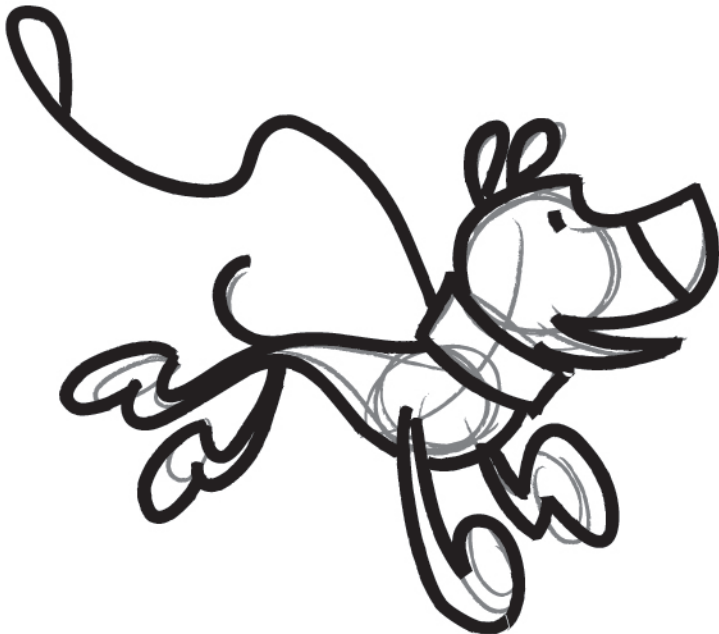
3. Add the collar and a teardrop shape for Larry's body.



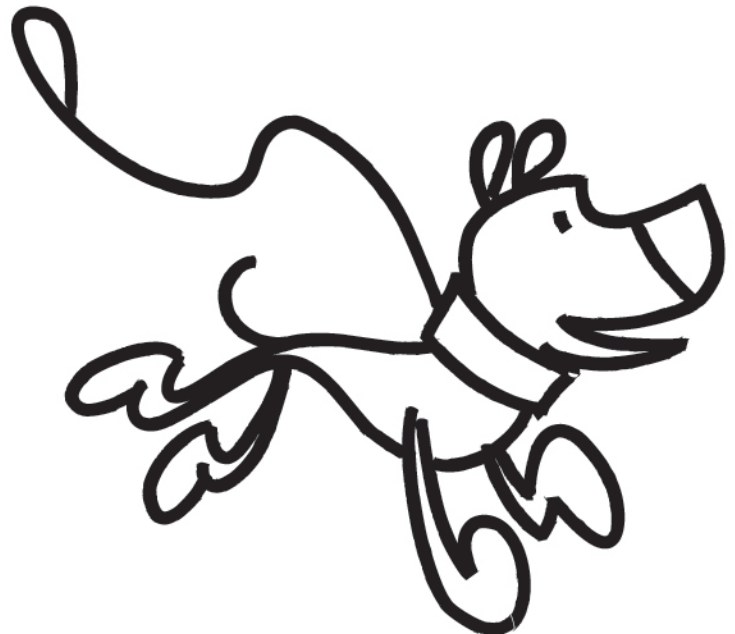
4. Add the legs, ears, and tail.



5. Use a marker to trace over the sketch. Add eyes and a leash.

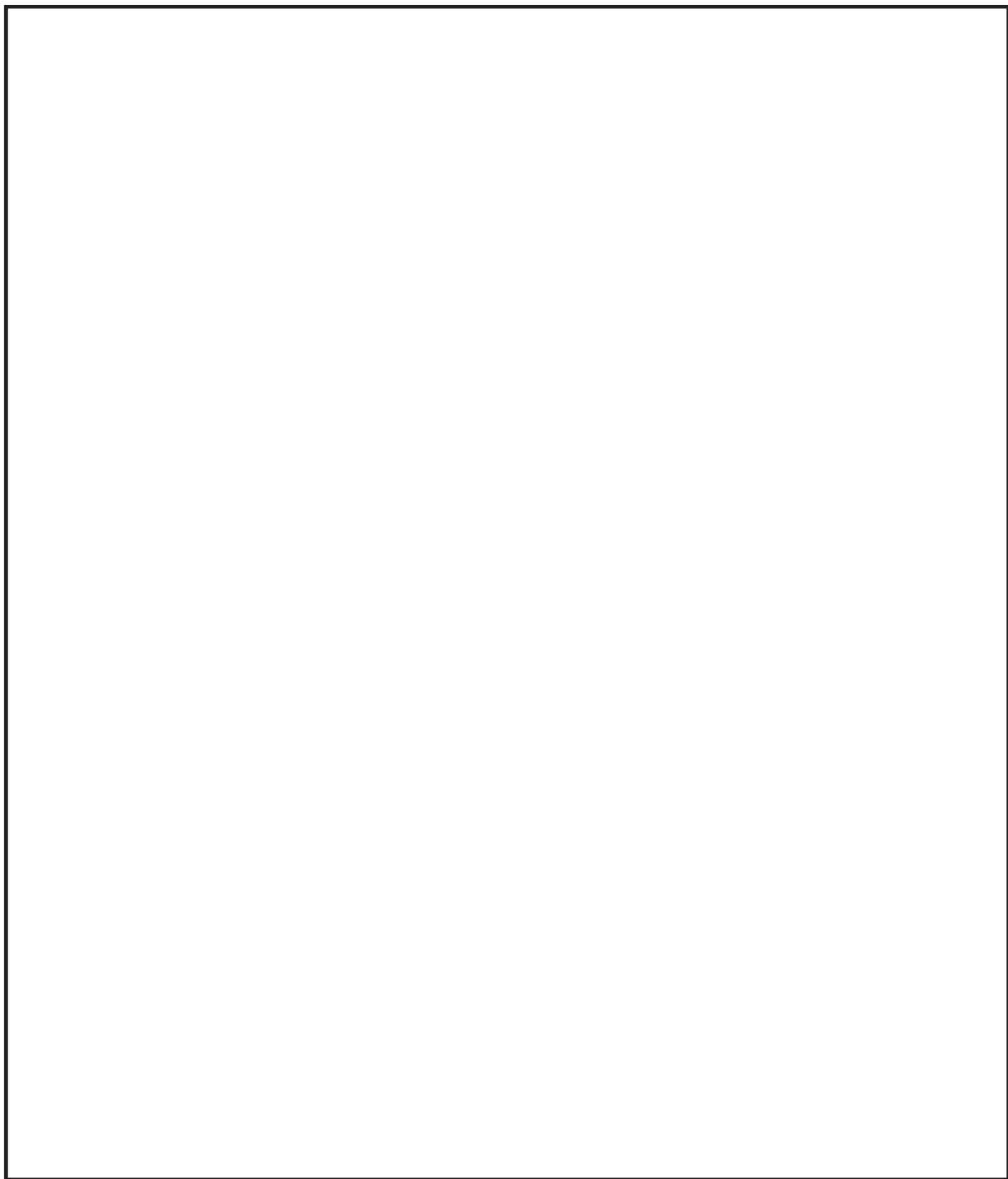


6. Erase the pencil lines.



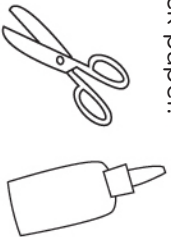
# How to Draw Larry

Your turn! Try drawing Larry in the space below.





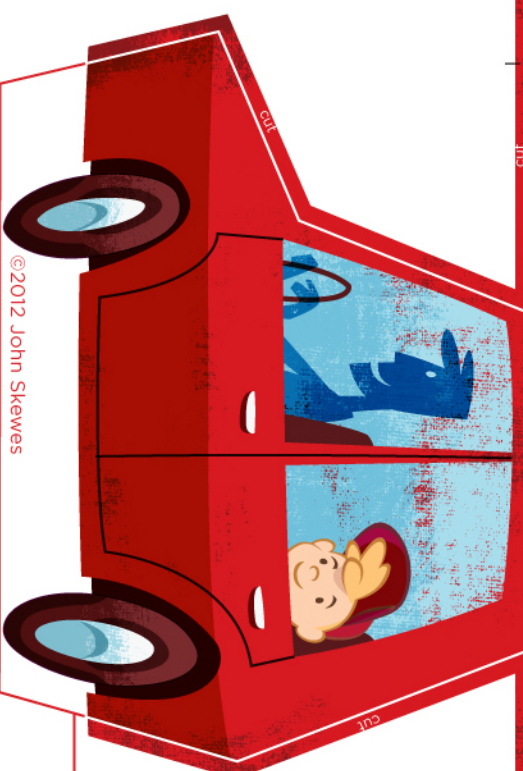
What you need:  
glue or glue stick, scissors.  
(Be careful! Ask your  
parents for help.)  
For best results, print  
on thick paper.



## Papercraft Family Car

### INSTRUCTIONS

1. Carefully cut out the car along the red and white lines.
2. Fold along all dotted lines as shown.
3. Glue the tabs and complete the car.



©2012 John Skewes



[larrygetslost.com](http://larrygetslost.com)

HAVE YOU  
SEEN



Storytime  
with Larry Gets Lost!

Date \_\_\_\_\_

Time \_\_\_\_\_